

South Gloucestershire Landscape Character Assessment

Annex II: Strategic Viewpoints

South Gloucestershire Council

Final Draft Report for Adoption Chapter 26

Prepared by LUC

September 2024



Version	Status	Prepared	Checked	Approved	Date
1	Draft Method and Pilot	E White L Jewitt	K Davies	K Davies	03.04.2023
2	Draft Report	L Jewitt V Kakar	E White	K Davies	16.05.2023
3	Draft Report	E White L Jewitt	E White	K Davies	14.07.2023
4	Final Draft	E White L Jewitt	E White	K Davies	01.11.2023
5	Final Draft (updated following New Local Plan Phase 3 consultation)	L Jewitt	E White	K Davies	12.06.2024
6	Final Draft Report for Adoption	L Jewitt	E White	K Davies	11.09.2024



Land Use Consultants Limited

Registered in England. Registered number 2549296. Registered office: 250 Waterloo Road, London SE1 8RD. Printed on 100% recycled paper

Contents

Chapter 26 **192**

Strategic Viewpoint 23: Woodwell Meadows (Littleton-upon Severn)

Characteristics 197

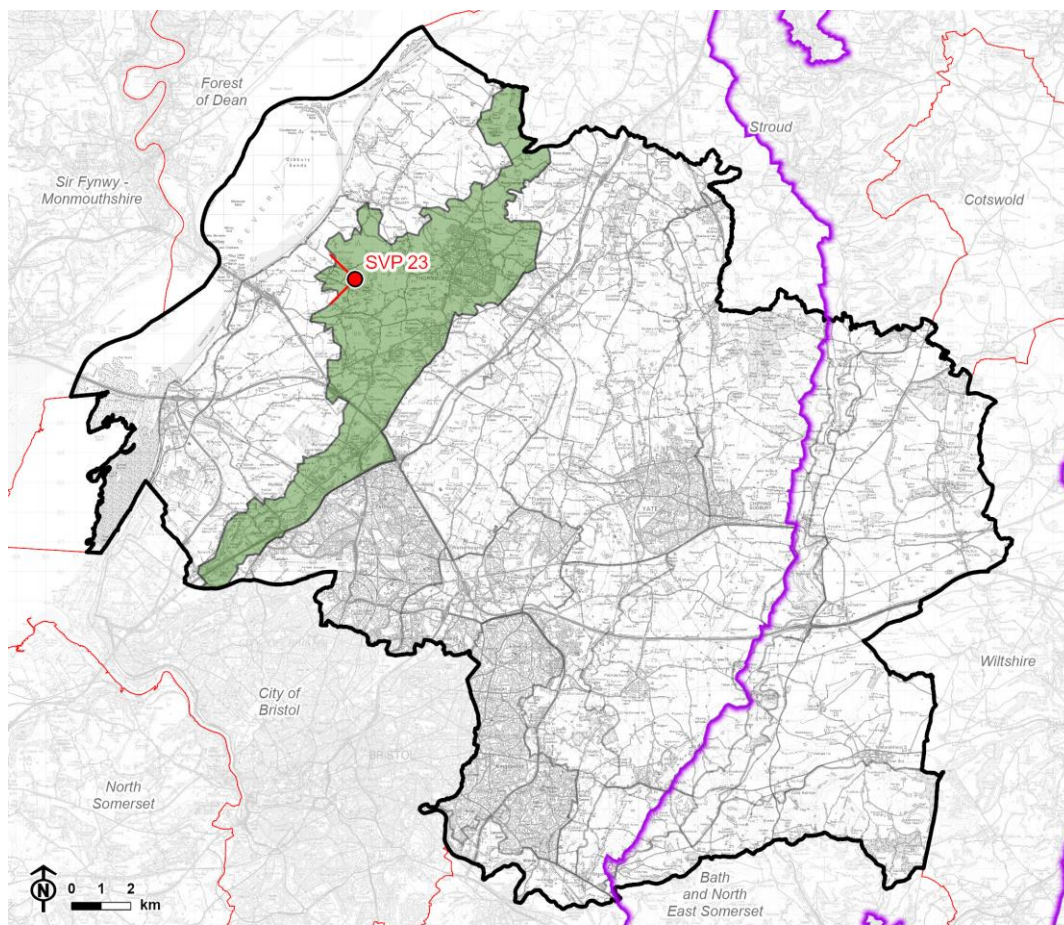
Summary 198

References **199**

Chapter 26

Strategic Viewpoint 23: Woodwell Meadows (Littleton-upon Severn)

Figure 26.1: Location of Strategic Viewpoint 23 and landscape character context

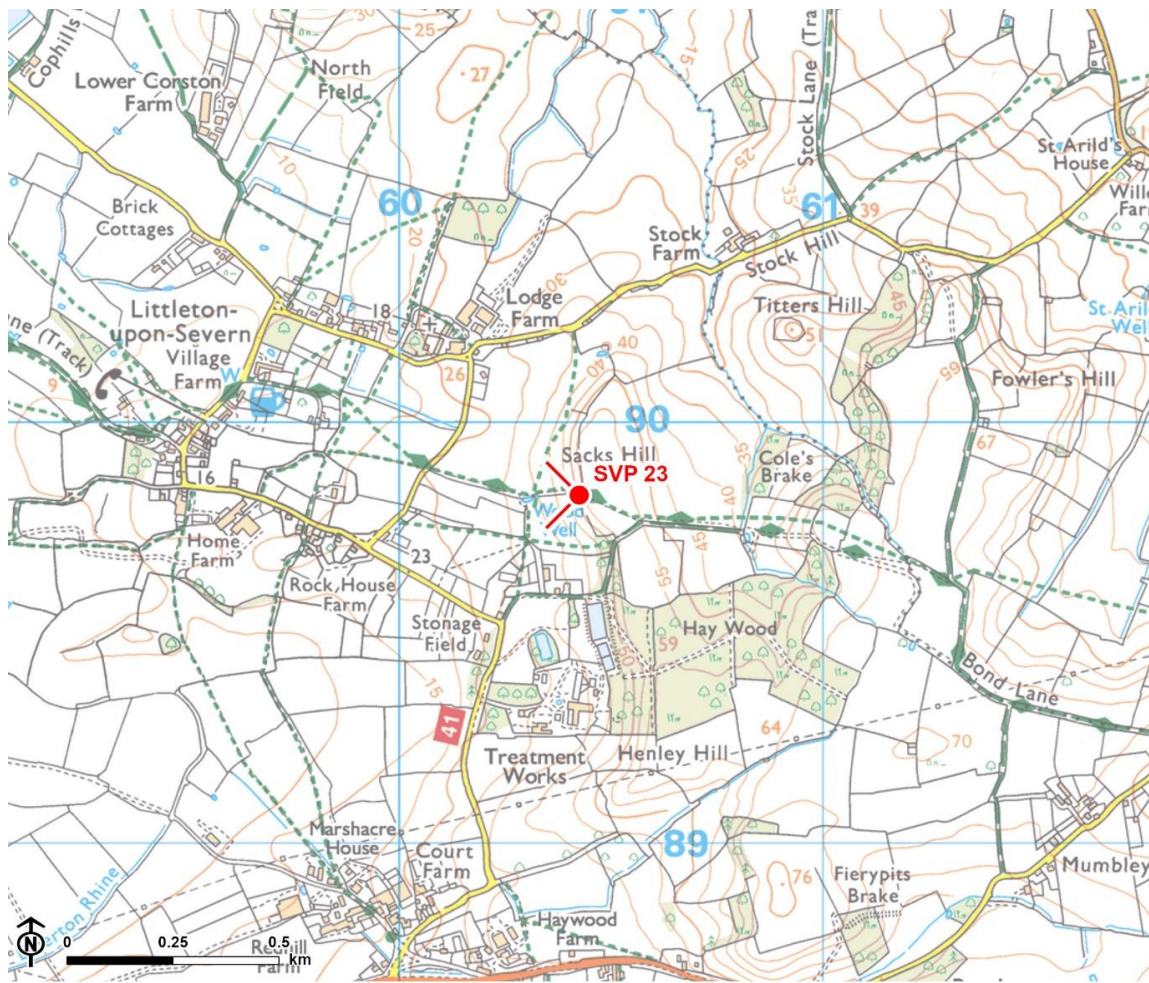


© Natural England copyright © Crown copyright and database rights, Ordnance Survey licence number 100023410 (2024).




CB:HS, EB:shayler, h LUC 12274_FiguresUpdates_MayJune2024 07/06/2024
Source: LUC, SGDC, NE, OS

-  Council boundary
-  Neighbouring local authority
-  Cotswolds National Landscape (AONB) boundary
-  LCA 18: Severn Ridges
-  Strategic viewpoint and angle

Figure 26.2: Detailed map of the location of Strategic Viewpoint 23



© Natural England. © Historic England. Contains Ordnance Survey data © Crown copyright and database rights, Ordnance Survey licence number 100023410, 2024.

-  Council boundary
-  Cotswolds National Landscape (AONB) boundary
-  Strategic viewpoint and angle



Viewpoint Information

Grid reference: ST 60418 89803

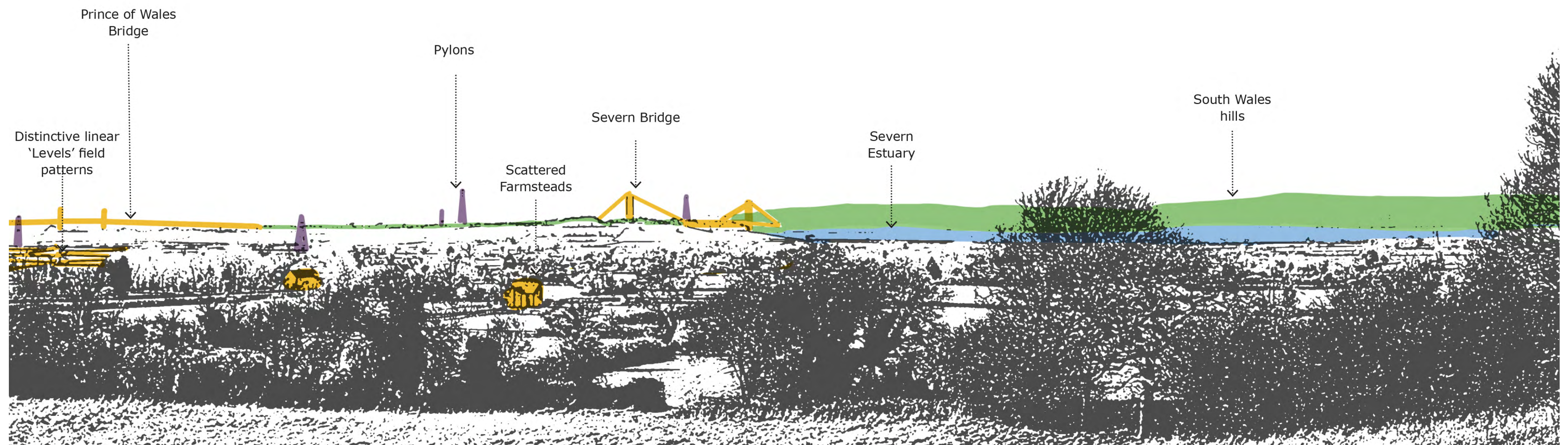
View location: Top of Woodwell Meadows Local Nature Reserve, near Littleton-upon-Severn.

View direction: View west and south across LCA 20: Pilning Levels towards LCA 21: Estuary, Shoreline and Levels .

Relationship with Visually Important Hillside (VIH): The viewpoint is located on Sacks Hill, part of the Severn Ridges VIH.

Experienced by: Recreational users of public rights of way including The Jubilee Way locally promoted route (OAU/15/20) and nearby footpath OAU/17/20.

Figure 26.3: View Composition of Strategic Viewpoint 23



 Key landscape feature

 Landmark / historic feature


 Detractive feature

Figure 26.4: Full Panoramic Photograph of Strategic Viewpoint 23



Strategic Viewpoint 23: Woodwell Meadows



Strategic Viewpoint 23 (continued)

Characteristics

Popularity, access and facilities

- Views from the viewpoint are noted in the Jubilee Way route guide leaflet (2009), which states that “*there are excellent views from the upper field to the Severn Estuary, the two Severn bridges and into Wales*” [See reference 1].
- The viewpoint is publicly accessible, located within the Woodwell Meadows Local Nature Reserve, and can be accessed via the Jubilee Way (footpath OAU/15/20) as well as several adjoining public rights of way.
- A bench and toposcope are provided as part of the ‘A Forgotten Landscape’ project to facilitate enjoyment and interpretation of the view.

Quality, value and features of the view

- An elevated viewpoint located on the upper west-facing slopes of the Severn Ridges VIH, affording panoramic (180°) views across the lower-lying levels (characterised by a distinctive geometric field pattern of linear rhines, a strongly wooded hedgerow framework and a dispersed settlement pattern of traditional farmsteads that contribute to the rural character of the view), towards the Severn Estuary and beyond to the wooded hills of the Wye Valley and South Wales.
- The Severn Bridge (Grade I listed) and Prince of Wales Bridges form distant landmarks within the view (located 7km and 7.8km away, respectively).
- Several pylon lines, as well as views south to industrial infrastructure (including chimneys and wind turbines) at Avonmouth slightly detract from the overall composition of the view.

Summary

The Woodwell Meadows viewpoint is categorised as a SVP as it meets most of the criteria to some extent. It is a well-known and recorded viewpoint and likely to attract many visitors being within the Woodwell Meadows Local Nature Reserve; it is located on a promoted footpath with a bench and toposcope provided to facilitate enjoyment and interpretation of the view; it provides a panoramic view that takes in the notable landscape features of the levels, the Severn Estuary and the hills of the Wye Valley and South Wales, and the landmark features of the Severn Bridge and the Prince of Wales Bridge.

References

References

- 1 The Jubilee Way route leaflet. (2009). Available at:
<https://www.southglos.gov.uk/Documents/Leaflets/PTE070023.pdf>

Report produced by LUC

Report produced by LUC

Bristol

12th Floor, Colston Tower, Colston Street, Bristol BS1 4XE

0117 929 1997

bristol@landuse.co.uk

Cardiff

16A, 15th Floor, Brunel House, 2 Fitzalan Rd, Cardiff CF24 0EB

0292 032 9006

cardiff@landuse.co.uk

Edinburgh

Atholl Exchange, 6 Canning Street, Edinburgh EH3 8EG

0131 202 1616

edinburgh@landuse.co.uk

Glasgow

37 Otago Street, Glasgow G12 8JJ

0141 334 9595

glasgow@landuse.co.uk

London

250 Waterloo Road, London SE1 8RD

020 7383 5784

london@landuse.co.uk

Manchester

6th Floor, 55 King Street, Manchester M2 4LQ

0161 537 5960

manchester@landuse.co.uk

landuse.co.uk

Landscape Design / Strategic Planning & Assessment

Development Planning / Urban Design & Masterplanning

Environmental Impact Assessment / Landscape Planning & Assessment

Landscape Management / Ecology / Historic Environment / GIS & Visualisation